

ROUTE - 3

Serial Data to Ethernet Converter
3 Channel RS-232

Applications

- Industrial and factory control
- Pipeline and wellheads - monitoring and control
- SCADA systems
- Security/monitoring systems
- Traffic monitoring and control systems
- Retail/point of sale



Description

Protect and revitalize your investment in expensive industrial serial equipment by using the ROUTE-3 to connect legacy devices to your 10 Base-T Ethernet network. This rugged Ethernet converter enables you to remotely access, control, and monitor serial equipment from any network location.

The ROUTE-3 permits point-to-point or point-to-multipoint transmission of asynchronous data over an Ethernet network. The ROUTE-3 may be used with other ROUTE-3s, or it may be used alone to establish a Telnet session with a computer.

Features

- 3 independent serial ports
- Separate configuration port
- Configurable through the network or serial port
- Emulates a modem if desired

A switch enables the ROUTE-3 to emulate a dial-up modem with dial-in and dial-out functions. The modem has three channels which are transparent to asynchronous data at any rate up to 128 Kbps. Full handshake control lines are implemented on the RS-232 ports.

To use the encryption option, you need ROUTE-3s at each end of the link; encryption cannot be enabled with a Telnet to ROUTE-3 connection.

Status LEDs indicate the Ethernet link and Transmit/Receive serial data.

- Transparent to serial data rate and protocol
- Password protection & optional encryption
- Network Activity indicator
- Serial data Tx/Rx indicators

Specifications

Electrical

Network data	IEEE 802.3, 10 Base-T
Network connector	RJ-45, shielded
Configuration & data ports	RS-232, RJ-45
Data Rate	Transparent to 128 Kbps
Power source.....	6V DC power cube, LTIPS-6, supplied
Supply voltage range	5.5V to 8V DC
Power consumption	< 2 Watts

ROUTE - 3

Serial Data to Ethernet Converter
3 Channel RS-232



Specifications (continued)

General

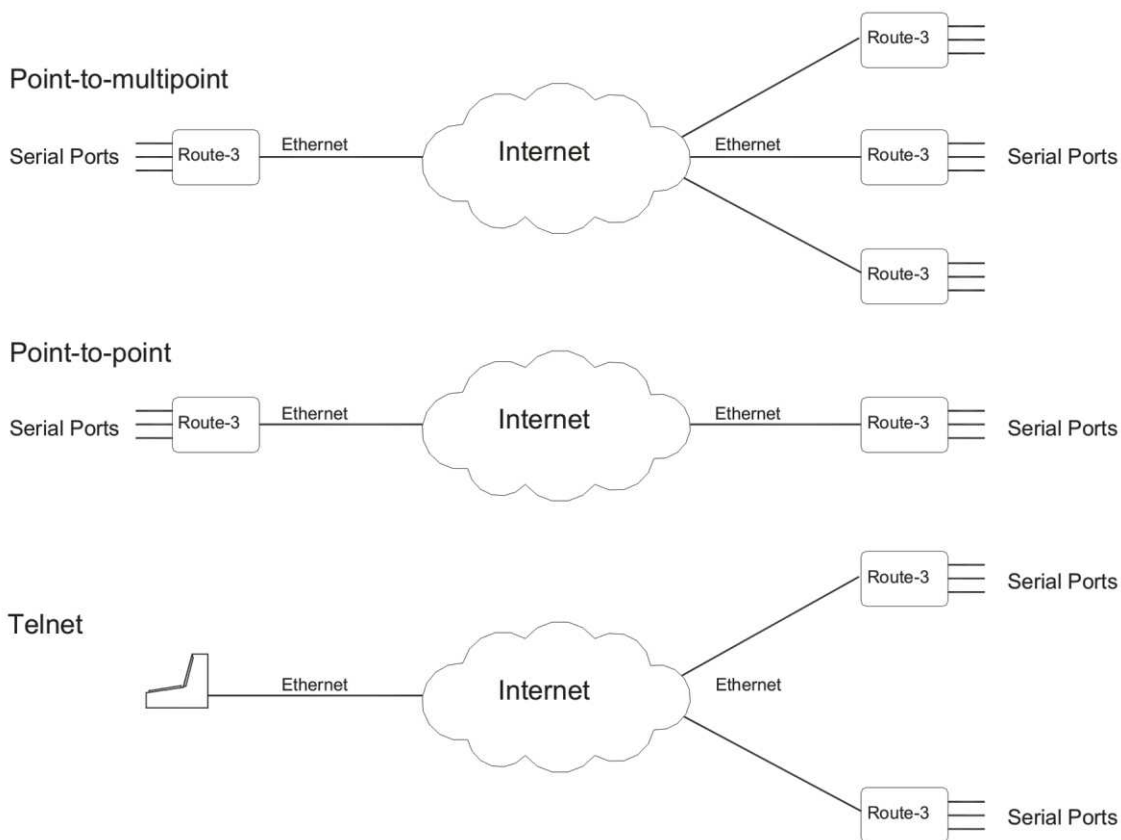
Operating temperature	0°C to +50°C
Humidity (RH)	10% to 95%
MTBF	> 100,000 hrs
Dimensions (H*W*D)	10cm * 15cm * 2cm

Specifications may be changed without notice.

Part Numbers

ROUTE 3	ROUTE 3, Stand alone unit, c/w power cube
ROUTE 3-E	ROUTE 3, with encryption
LTIPS-6	Extra power cube

Typical Network Connections



5/09/03

LUXCOM Technologies Inc.

102 Walgreen Road, Ottawa, Ontario K0A 1L0 Canada Tel.: +1 (613) 831-7777 Fax: +1 (613) 831-7778
email: sales@luxcom.com www.luxcom.com