

# ROUTE-10

Serial Data to Ethernet Converter  
RS232, RS485-2W or RS485-4W

## Applications

- Industrial and factory control
- Pipeline and wellheads - monitoring and control
- SCADA systems
- Security/access control systems
- Traffic monitoring and control systems
- Retail/Point of Sale



## Description

Protect and revitalize your investment in expensive industrial serial equipment by using the ROUTE-10 to connect legacy devices to your 10 Base-T Ethernet network. This rugged Ethernet converter enables you to remotely access, control, and monitor serial equipment from any network location.

The ROUTE-10 permits point-to-point or point-to-multipoint transmission of asynchronous data over an Ethernet network. The device may be used with other ROUTE-10s, or it may be used alone to establish a Telnet session with a computer. If a multipoint network with a poll/respond protocol is desired, the ROUTE-10 at the polling end is configured as a server, and the ROUTE-10s at the responding nodes are configured as clients. Serial data input to the server will be received at every client, while client data will only be received at the server. Password protection and a user addressable serial port provide network security. To use the encryption option, you need ROUTE-10s at each end of the link; encryption cannot be enabled with a Telnet to ROUTE-10 connection.

The ROUTE-10 has three interfaces: an RS232, an RS485 4-wire, and an RS485 2-wire. ROUTE-10s can communicate with other ROUTE-10s, regardless of the interface used for transmission and reception. The modem is data rate transparent to asynchronous data at any rate up to 128 Kbps. Full handshake functions are implemented on the RS232 port. Status LEDs indicate the Ethernet link and Transmit and Receive data for serial data interfaces.

## Features

- |   |  |
|---|--|
| Configurable through a serial or network port     | Encryption option                      |
| Point-to-point communication                      | Send and Receive indicators            |
| Point-to-multipoint communication (16 nodes max.) | Low power consumption                  |
| Transparent to serial data rate and protocol      | Network activity indicator             |
| Separate RS232, RS485-2W, RS485-4W ports          | 5 year warranty                        |
| Password protection                               | Wide temperature range (-40 C to 75 C) |

# ROUTE-10

Serial Data to Ethernet Converter  
RS232, RS485-2W or RS485-4W



## Specifications

### Electrical

Network data .....	IEEE 802.3, 10 Base-T
Network connector .....	RJ-45, shielded
Data 1 & configuration ports.....	RS-232, RJ-45
Data 2 port.....	RS-485 4-Wire, RJ-45
Data 3 port.....	RS-485 2-Wire, RJ-45
Data rate.....	Transparent to 128 Kbps
Power source .....	117V to 6V DC power cube, LTIPS-6, supplied
Supply voltage range.....	5.5V to 8V DC
Power consumption .....	< 2 Watts

### General

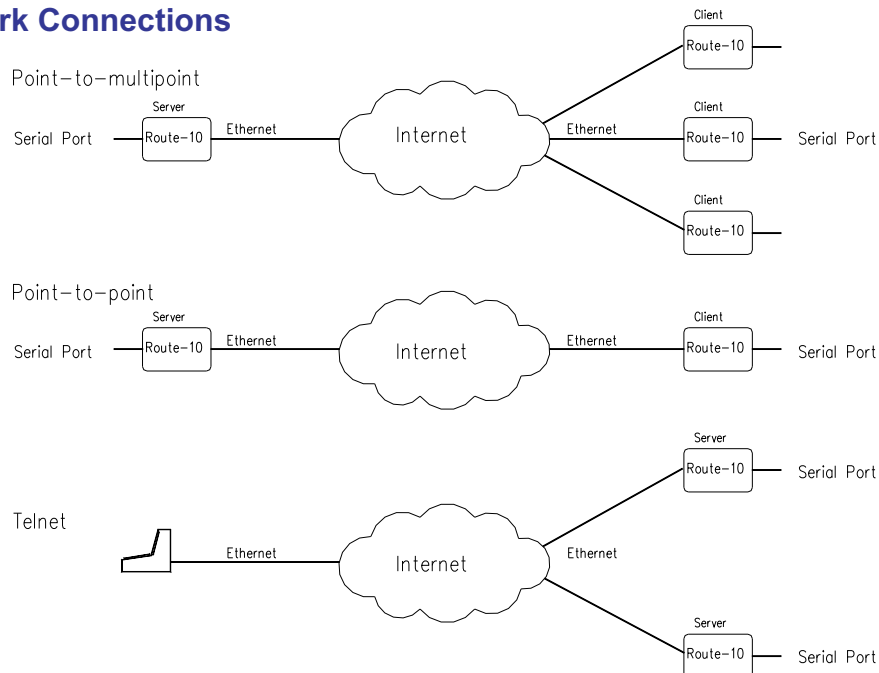
Operating Temperature .....	-40°C to 75°C
Humidity (RH) .....	10% to 95%
MTBF .....	> 100,000 hrs
Dimensions (H*W*D) .....	10cm * 15cm * 2cm

\*Specifications may be changed without notice.

## Part Numbers

ROUTE10 .....	Stand-alone unit, c/w power cube
ROUTE10-E .....	ROUTE-10, with encryption
LTIPS-6 .....	Extra power cube

## Typical Network Connections



LUXCOM Technologies Inc.

102 Walgreen Road, Ottawa, Ontario K0A 1L0 Canada Tel.: +1 (613) 831-7777 Fax: +1 (613) 831-7778

email: sales@luxcom.com

www.luxcom.com